

Discussion and Considerations for Management:

The TOB now has a functional Diver Assisted Suction Harvest (DASH) system that will be available for use in the summer of 2017. But, due to the significant expansion of EWM in 2016 and the potential for further expansion in 2017, a bed or potentially lake-wide herbicide treatment may be necessary to “reset the clock” to the point a DASH system could keep up with expected EWM growth. Ideally, if an active management strategy is decided upon, it will begin/occur as early in the 2017 growing season as possible before the infestation can spread further.

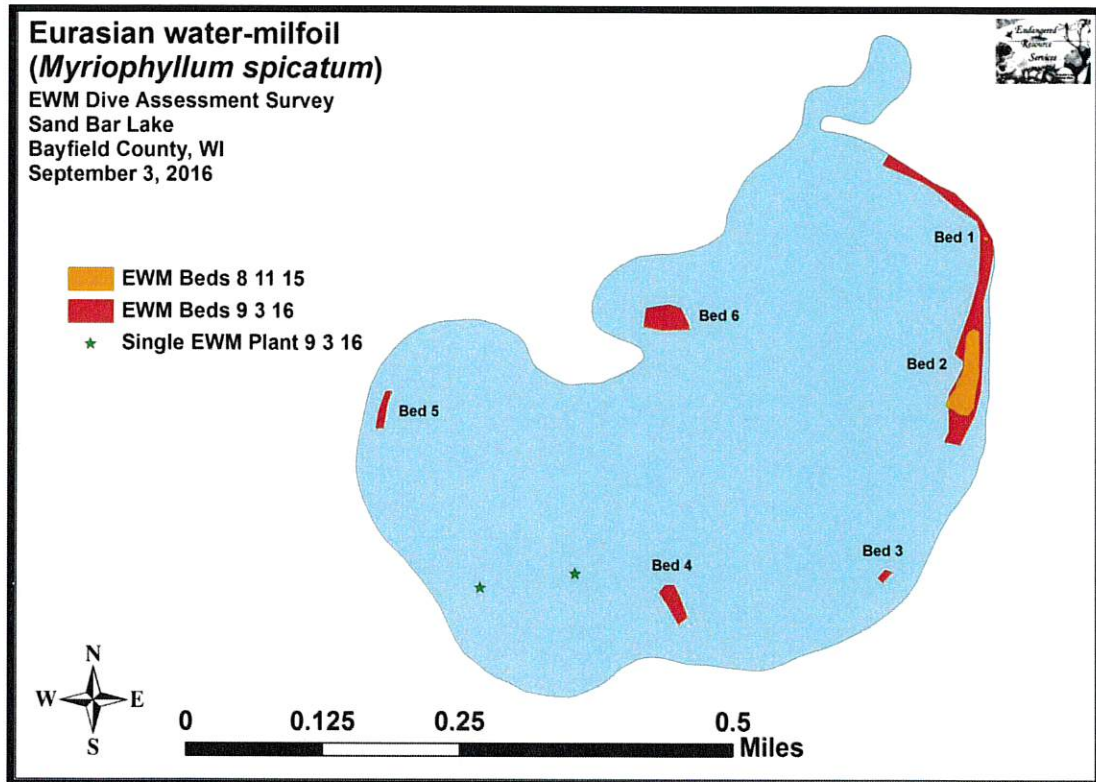


Figure 4: EWM Locations on Sand Bar Lake – 9/3/16

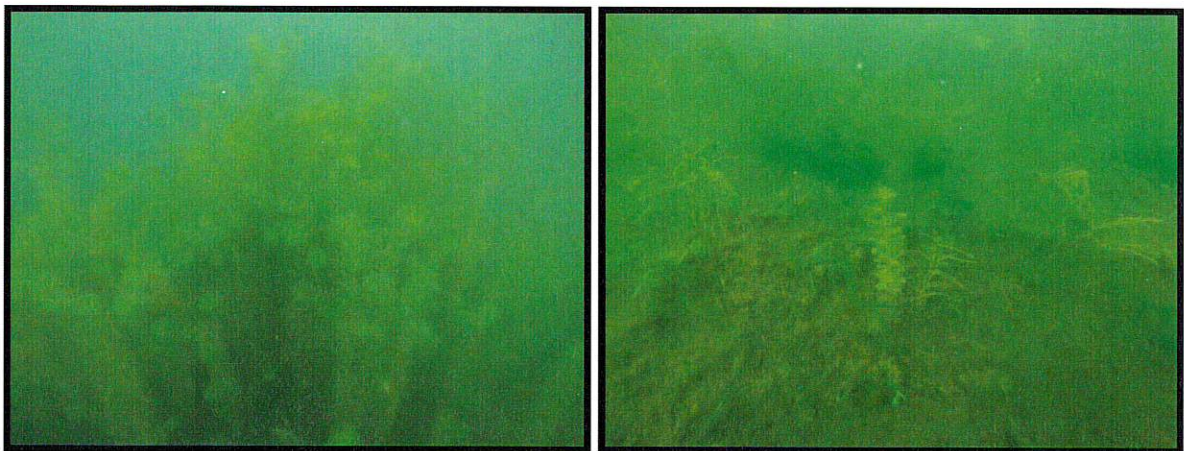


Figure 5: Dense EWM Towers in 6ft of Water/EWM Sprouts in 20ft Sand Bar Lake – 9/3/16