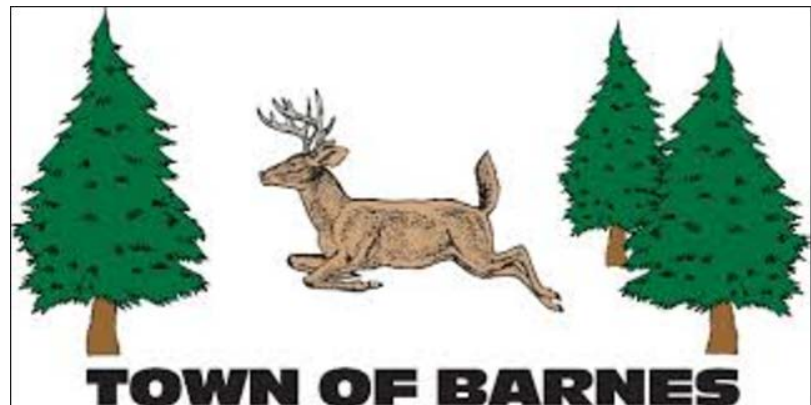


Tomahawk Lake Park

A Community Gem

Public Information Meeting
May 16, 2017 Barnes Town Hall





A Community Gem

91 acres and 1275 feet lakeshore

Clear sandy lake with beach and boat ramp

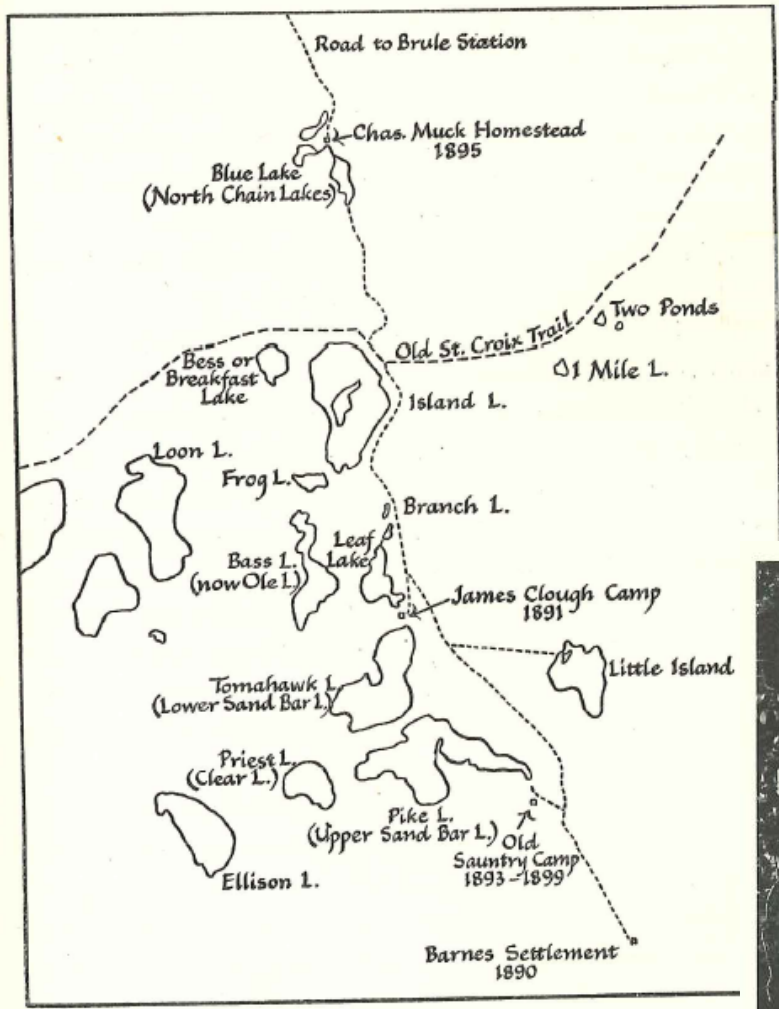
Picnic shelter and swings

Pit toilets

Sledding hill

8.4 km (5.2 miles) trails

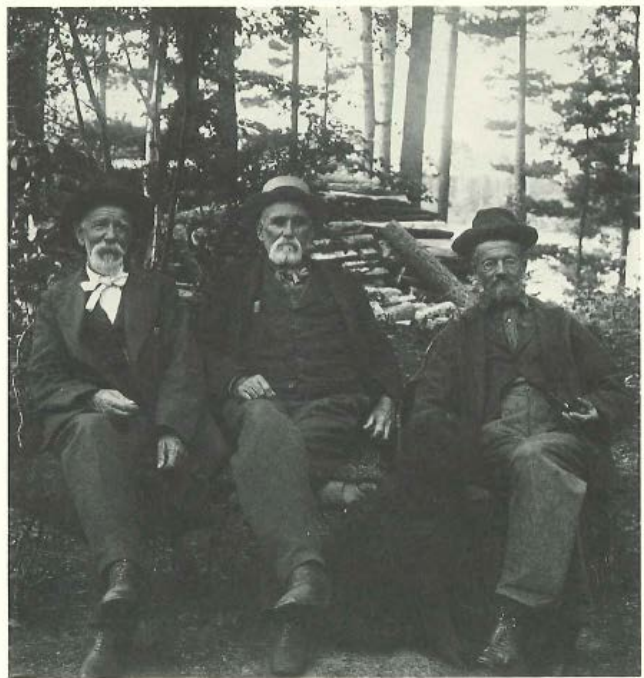
Images: St. Croix Trail Country by William Gray Purcell



THE OLD ST. CROIX TRAIL COUNTRY NEAR ISLAND LAKE



The St. Croix Trail



Mr. Paulsen (a homesteader), Lewis Ramsdell, and William Young

Rich history



- **Funding**
- **Project activities**
- **Timeline**
- **How you can help**

Today's program

- **Total project cost: \$100,117.91**
- **\$50,000 state funding**
- **\$50,117.91 Town match**
 - Volunteer labor and equipment
 - TOB staff labor and equipment
 - TOB funding
 - Cash donations



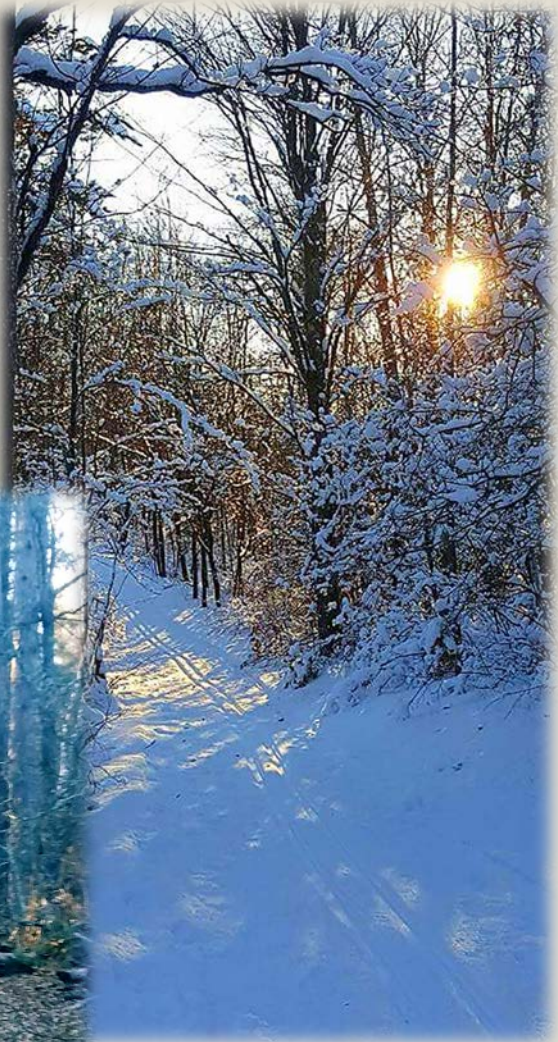
Example: Eau Claire Lakes Conservation Club donating a total of \$6730 in cash, volunteer labor & equipment

Stewardship grant funding

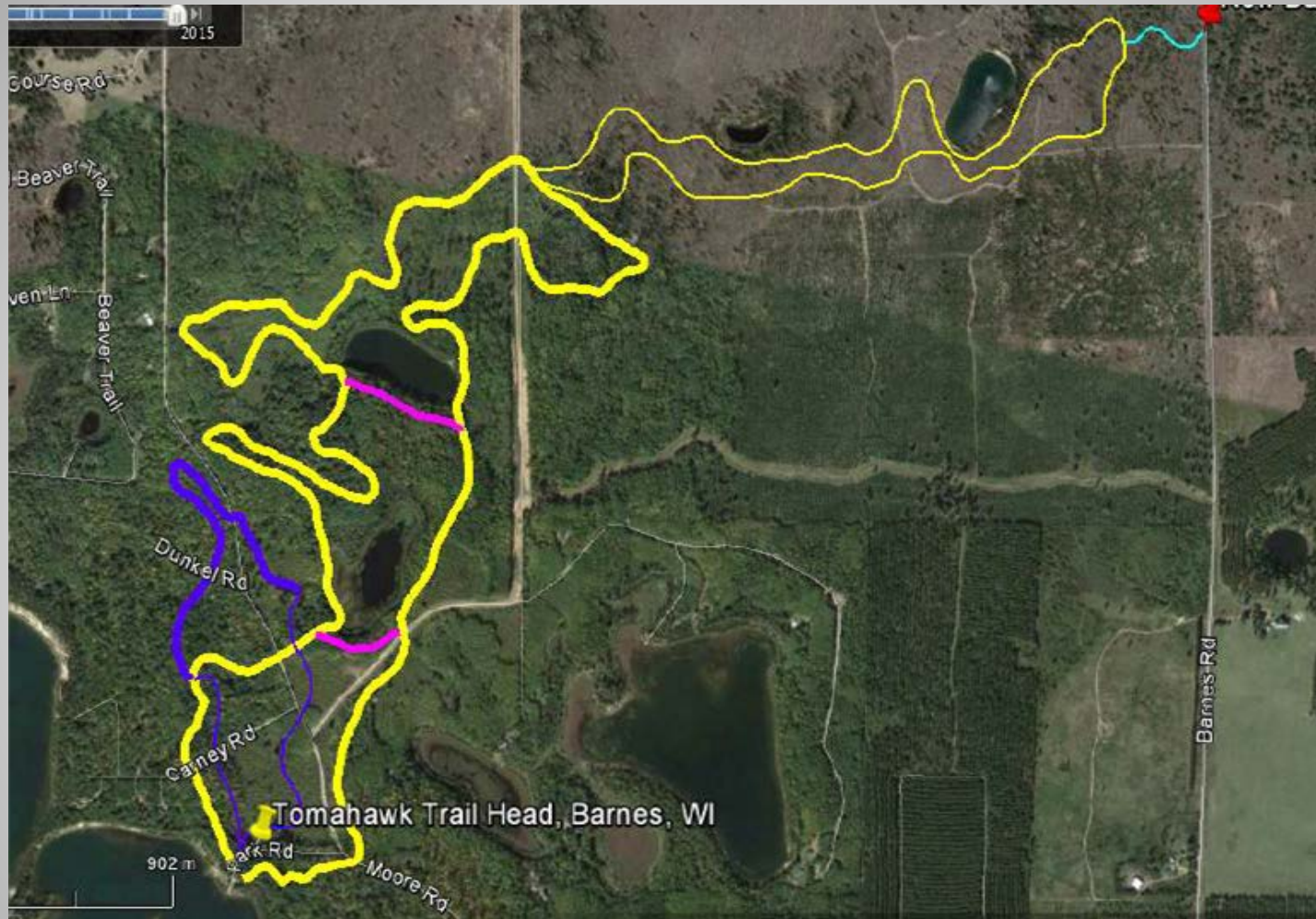
- **Improved and expanded trails**
- **Better fishing opportunities**
- **Park shelter**
- **Interpretive nature experience**



Project components



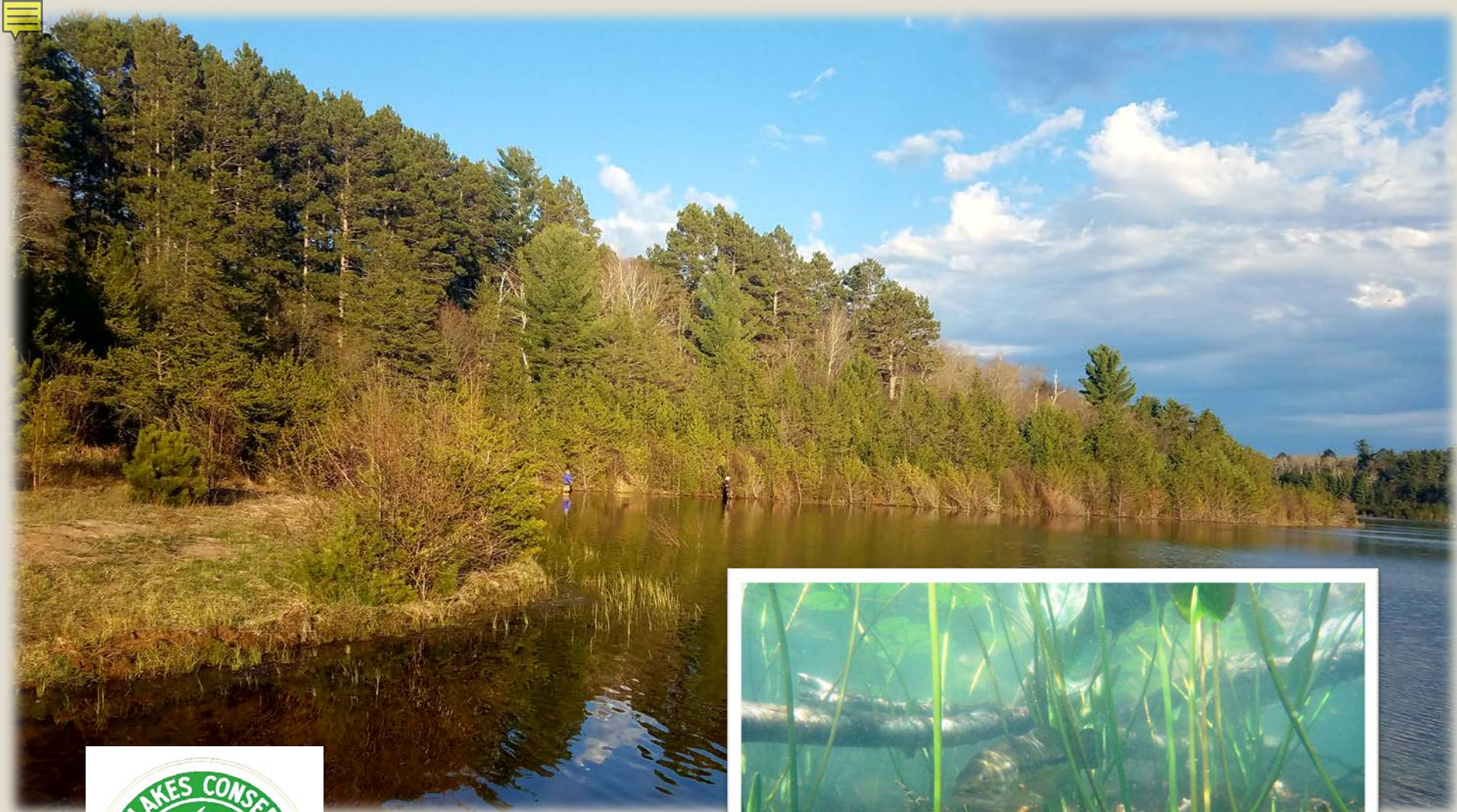
Improve and expand the trails



Improve and expand the trails



Improve and expand the trails



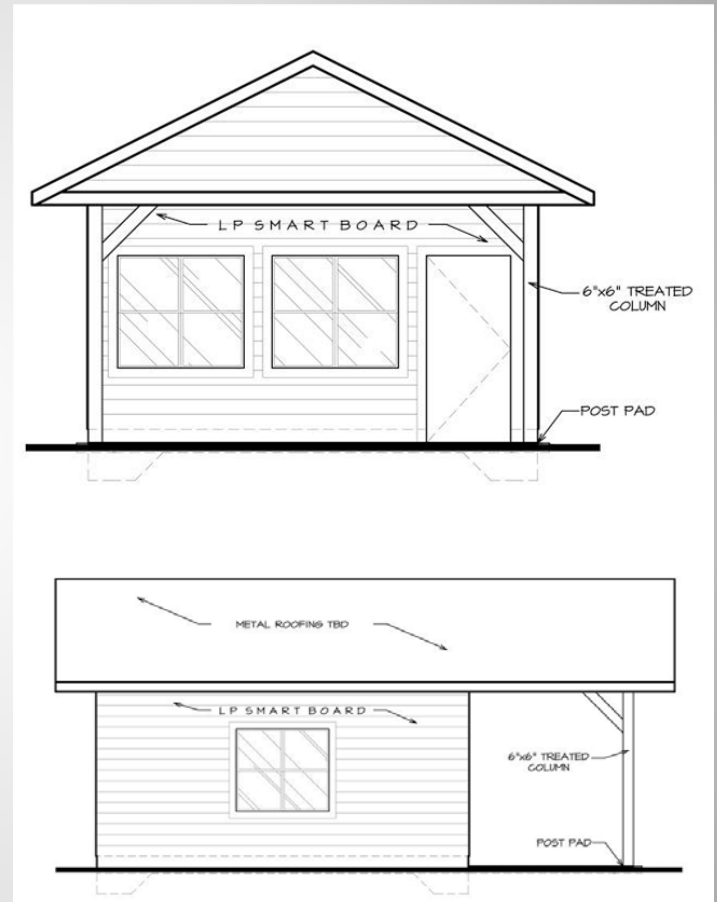
Improve fishing opportunities



Park shelter

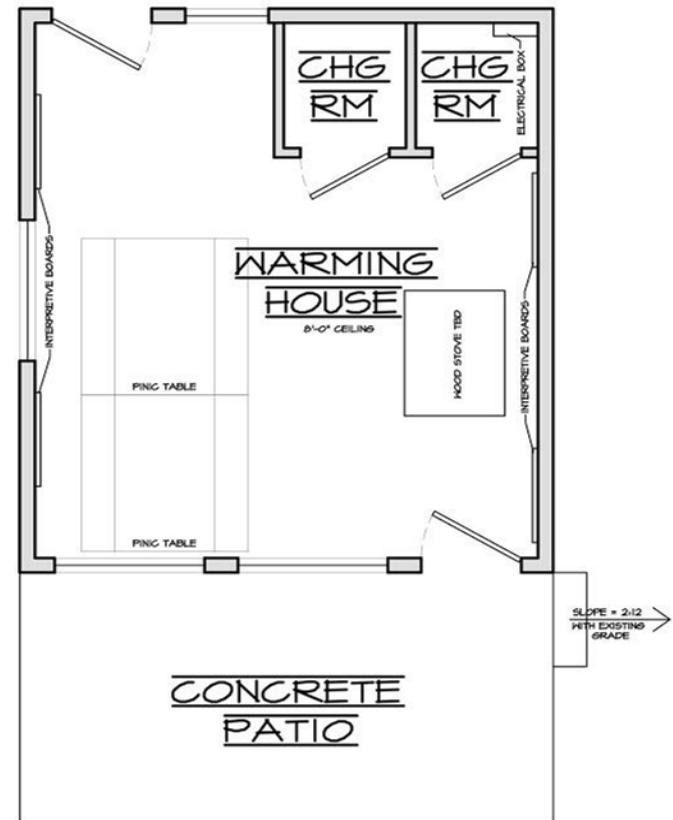


Example of rustic exterior – not exact



Park Shelter

- Electric
- Picnic table
- Changing Rooms
- Partially covered patio
- Water outside
- Wood heat
- Interpretive panels
 - Local history
 - Woodland critters
 - The lake and its creatures



Park shelter & interpretive nature experience

- White Tailed Way
- Raccoon Route
- Porcupine Pike
- Bobcat Byway
- Wild Turkey Trot
- Bear Bottoms
- Lynx Loop
- Turtle Town
- Frog Hollow

Trailhead
White-Tailed Way



White-Tailed Deer

The keen hearing of this deer guarantees that it knows about you before you know about it.

Lots of times all we see of this deer is its conspicuous tail in the distance as it gallops away. In summer the white-tailed deer grazes on green foliage in the forests and its coat is a soft tan color. In autumn and winter the white-tailed deer eats acorns and woody brush and its coat changes to grayish brown.

The white-tailed deer tracks are heart-shaped and pointed. White-Tailed Way is marked with the tracks of this animal.

Learn more about the White-Tailed Deer.



<http://eekwi.org/critter/mammal/fawn.htm>

Interpretive nature experience

- **3 Lakefront signs**

- Aquatic plants and shoreline vegetation
- St. Croix watershed
- Fish in Tomahawk Lake

- **2 - Upland signs**

- Native birds
- Native trees



Interpretive nature experience



PHASE 1 – 2017 summer - fall

1. Trails on town property widened (May 1)
2. Park shelter (July 1)
3. Existing trailhead shaped and graveled
4. Donated dock installed in fish sticks bay

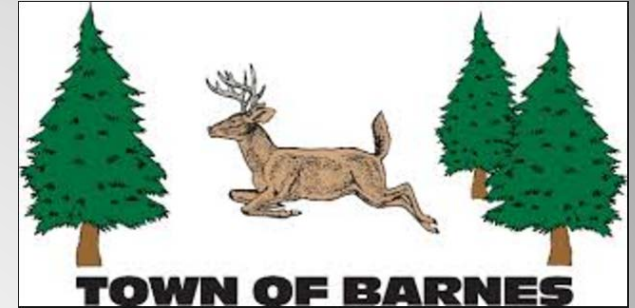
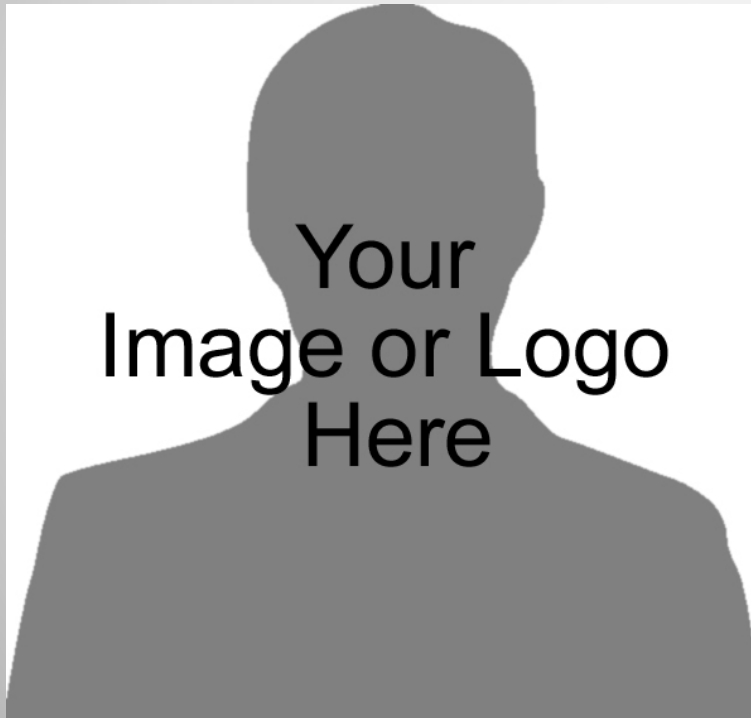
PHASE 2 – fall 2017 – fall 2018

1. Park trailhead and parking lot improved
2. Fish sticks (winter)
3. Barnes Road trailhead
4. Trail on Bayfield County land

- Designated uses, other than addition of skate skiing, will remain the same for now
- Work with town and park/rec committee to revisit uses during/after completion
- Assist with maintenance, fundraising, and events in the future
- Future projects, including possible single track trail and yurt on the radar

Friends of Tomahawk Lake Park

- Donations of time, equipment, and funding are welcome
- See Pledge Form



Friends of
Tomahawk Park

How you can help



**I could never resist the call of the trail.
Buffalo Bill**